



motorola

Lifestyle
Product Spec Sheets

2019-20



motorola

SONIC SUB 630 BASS TWIN

True Wireless Pairing :
Connect Two Speakers For Extra Power
Magnetic Design For Any Occasion



**Unlock 70,000+ Amazon Alexa
skills with Hubble Connected™**



**IPX5
water resistant¹**



**9h
play time²**



**Bluetooth® 5.0
technology**



**Connect
2 Speakers
to 1 Phone
for more power**



Transform The Atmosphere With Enhanced Bass And Subwoofer X 2.

Change the atmosphere with music played on a speaker that features an exceptionally great sound quality with Enhanced Bass and Subwoofers. Crafted for both indoor and outdoor use, Sonic Sub 630 features a powerful 9-hours playing time on max volume, IPX5 waterproof and sleek design, and faultless compatibility with Siri, Alexa, and Google Assist. Synchronise a pair of these speakers from just one device to get a full stereo sound that enhances the way you play music. They are the ultimate portable Bluetooth speaker that truly allows you to connect with your music and enjoy a wholesome experience.



Features

- Bluetooth® v5.0
- Waterproof IPX5¹
- EXCEPTIONALLY GREAT SOUND with EXTRA BASS and SUBWOOFERS
- Powerful battery with 9H playtime with Max volume²
- Magnetic connect to twin speaker
- Unit comes with a magnet to connect to twin speaker Sonic Sub 630
- Makes life simpler with voice command³
 - Alexa, Siri, Google Assistant

What the Unit Ships With

Bluetooth Speaker
Charging Cable
User Guide

- (1) IPX5 - Withstands water splashing from any direction. Not designed to work while submerged underwater. Do not use while swimming, or subject it to pressurized streams of water. Dust Protected.
(2) Device, signal strength and network dependent.
(3) Operating system dependent.

Shipping Information

Black

UPC: TBC
ITF: TBC
EAN: 5012786040632
Outer EAN: 5012786040649

Model: SP017

Box Type: Colour Box
QTY/CTN: 10 pair
Unit Dimensions: L140mm x W74mm x H75mm
(L5.51" x W2.91" x H2.95")

Gross Weight: 385g
Gift Box: L156mm x W180mm x H110 mm
(L6.14" x W7.09" x H4.33")

Red

UPC: TBC
ITF: TBC
EAN: 5012786040656
Outer EAN: 5012786040663

Gross Weight: 901g
Outer Carton: L845mm x W380mm x H120 mm
(L33.3" x W15.0" x H4.72")
Gross Weight: 10.5kg
Net weight: 10kg
Main material used for device and thickness: ABS
Battery included: Yes
Battery type and battery weight: 18650, 48g



motorola

SONIC SUB 530 BASS

True Wireless Pairing



Unlock 70,000+ Amazon Alexa skills with Hubble Connected™



IPX5
water resistant¹



9h
play time²



Bluetooth® 5.0
technology



Connect
2 speakers
to 1 phone
for more power



Bass And Subwoofer Taken To The Next Level.

Sonic Sub 530 will excite you with its powerful stereo sound quality and stylish but minimalist design. This 5-watts speaker effortlessly delivers dynamic and immersive sound powered by the enhanced bass and subwoofers for both indoor and outdoor use. With a 9-hour playtime, faultless compatibility with voice commands like Siri, Alexa, and Google Assistant, and IPX5 certified waterproof, Sonic Sub 530 prides itself as the portable Bluetooth speaker that you can take anywhere with you for a powerful listening experience.



Features

- Bluetooth® v5.0
- Waterproof IPX5¹
- EXCEPTIONALLY GREAT SOUND with EXTRA BASS and SUBWOOFERS
- Powerful battery with 9H playtime with Max volume²
- Bluetooth to connect with twin speaker
- Two speaker connection for Sonic Sub 530
- Makes life simpler with voice command³
 - Alexa, Siri, Google Assistant

What the Unit Ships With

Bluetooth Speaker
Charging Cable
User Guide

- (1) IPX5 - Withstands water splashing from any direction. Not designed to work while submerged underwater. Do not use while swimming, or subject it to pressurized streams of water. Dust Protected.
(2) Device, signal strength and network dependent.
(3) Operating system dependent.

Shipping Information

Black

UPC: TBC
ITF: TBC
EAN: 5012786040694
Outer EAN: 5012786040700

Model: SP016

Box Type: Colour Box
QTY/CTN: 10
Unit Dimensions: L140mm x W74mm x H75mm
(L5.51" x W2.91" x H2.95")

Gross Weight: 360g
Gift Box: L156mm x W110mm x H110 mm
(L6.14" x W4.33" x H4.33")

Red

UPC: TBC
ITF: TBC
EAN: 5012786040670
Outer EAN: 5012786040687

Gross Weight: 455g
Outer Carton: L565mm x W327mm x H125 mm
(L22.2" x W12.9" x H4.92")
Gross Weight: 5.8kg
Net weight: 5.3kg
Main material used for device and thickness: ABS
Battery included: Yes
Battery type and battery weight: 18650, 48g



motorola

SONIC SUB 340 BASS TWIN

**True Wireless Pairing :
Connect Two Speakers For Extra Power**



**Unlock 70,000+ Amazon Alexa
skills with Hubble Connected™**



**IPX5
water resistant¹**



**11h
play time²**



**Bluetooth® 5.0
technology**



**Connect
2 speakers
to 1 phone
for more power**



Powerful Stereo Bass All Day Long.

Getaway on a listening journey like never before with Sonic Sub 340. It effortlessly delivers the best sound quality, equipped with Enhanced Bass with Subwoofers. Enhance your listening experience with its capacity to connect two Sonic Sub 240 Bass in one phone for a dynamic stereo quality. Its compact style also features an 11-hours playtime, IPX 5 waterproof certification, and faultless compatibility with voice commands like Siri, Alexa, and Google Assistant making it your best listening companion anywhere.



Features

- Bluetooth® v5.0
- Waterproof IPX5¹
- EXTRA BASS with Subwoofers:
Sounds better than anything else in its class
- Long lasting battery with 11H playtime
with Max volume²
- Indoor- outdoor stereo sound true
wireless speaker
- Bluetooth to connect twin speakers
- Portable, compact, and rugged
- Makes life simpler with voice command³
 - Alexa, Siri, Google Assistant

What the Unit Ships With

Bluetooth Speaker
Charging Cable
User Guide

- (1) IPX5 - Withstands water splashing from any direction. Not designed to work while submerged underwater. Do not use while swimming, or subject it to pressurized streams of water. Dust Protected.
(2) Device, signal strength and network dependent.
(3) Operating system dependent.

Shipping Information

Black

UPC: TBC
ITF: TBC
EAN: 5012786040717
Outer EAN: 5012786040724

Red

UPC: TBC
ITF: TBC
EAN: 5012786040731
Outer EAN: 5012786040748

Blue

UPC: TBC
ITF: TBC
EAN: TBC
Outer EAN: TBC

Model: SP015

Box Type: Colour Box
QTY/CTN: 10 pair
Unit Dimensions: L75mm x W72mm x H98mm
(L2.95" x W2.83" x H3.86")

Gross Weight: 254g
Gift Box: L124mm x W180mm x H100mm
(L4.88" x W7.09" x H3.94")
Gross Weight: 627g
Outer Carton: L635mm x 375mm x 120mm
(L25" x W14.8" x H4.72")

Gross Weight: 7.28kg
Net weight: 6.78kg
Main material used for device and thickness: ABS
Battery included: Yes
Battery type and battery weight: 18650 48g



motorola

SONIC SUB 240 BASS

True Wireless Bluetooth Speaker



Unlock 70,000+ Amazon Alexa skills with Hubble Connected™



IPX5
water resistant¹



11h
play time²



Bluetooth® 5.0
technology



Connect
2 speakers
to 1 phone
for more power



Great Stereo Sound On The Go.

Sink yourself in an immense listening experience with this Bluetooth speaker equipped with superb sound and enhanced bass with subwoofers. Featuring its compact design which has an IPX 5 waterproof certification, an 11-hours playtime, and faultless compatibility with voice commands like Siri, Alexa, and Google Assistant; Sonic Sub 240 is your best lifestyle speaker with incredible features rolled into one.



Features

- Bluetooth® v5.0
- Waterproof IPX5¹
- EXTRA BASS with Subwoofers:
Sounds better than anything else in its class
- Long lasting battery with 11H playtime
with Max volume²
- Indoor- outdoor stereo sound true
wireless speaker
- Bluetooth to connect twin speakers
- Portable, compact, and rugged
- Makes life simpler with voice command³
 - Alexa, Siri, Google Assistant

What the Unit Ships With

Bluetooth Speaker
Charging Cable
User Guide

- (1) IPX5 - Withstands water splashing from any direction. Not designed to work while submerged underwater. Do not use while swimming, or subject it to pressurized streams of water. Dust Protected.
(2) Device, signal strength and network dependent.
(3) Operating system dependent.

Shipping Information

Black

UPC: TBC
ITF: TBC
EAN: 5012786040779
Outer EAN: 5012786040786

Red

UPC: TBC
ITF: TBC
EAN: 5012786040755
Outer EAN: 5012786040762

Blue

UPC: TBC
ITF: TBC
EAN: TBC
Outer EAN: TBC

Model: SP015

Box Type: Colour Box
QTY/CTN: 10
Unit Dimensions: L75mm x W72mm x H98mm
(L2.95" x W2.83" x H3.86")
Gross Weight: 254g
Gift Box: L124mm x W100mm x H100mm
(L4.88" x W3.94" x H3.94")
Gross Weight: 338g
Outer Carton: L515mm x W263mm x H115mm
(L20.3" x W10.4" x H4.53")
Gross Weight: 4.83kg
Net weight: 4.33kg
Main material used for device and thickness: ABS
Battery included: Yes
Battery type and battery weight: 18650 48g



motorola

SONIC BOOST 220

Smart Portable Wireless Speaker



Waterproof
(IPX5)¹



Up to 6 hours
of playtime²



Rich sound
quality



Smart Voice
Assistant³



Unlock 70,000+ Amazon Alexa
skills with Hubble Connected™

Small But Powerful.

They say big things come in small packages, so we created the Sonic Boost 220 Portable Wireless Speaker. Created to be the most dependable companion, on all of your adventures, with its small, portable design, up to 6 hours of playtime and IPX5 waterproof protection. Immerse yourself in sound, with its superb 3W speaker and choose how you listen, with 2 ways to play (Bluetooth and aux-in port). This little but innovative speaker connects to compatible smart devices via Bluetooth, and it works with Amazon Alexa, Siri & Google Assistant, so you can stream music, ask questions, place orders, and so much more, using just your voice. The Motorola Sonic Boost 220. Small but Powerful.



Features

- Bluetooth® v5.0
- Rich sound quality
- Portable, compact design
- IPX5 Waterproof¹
- Up to 6 hours play time²
- 40mm drivers
- 3W speaker
- Built-in mic for hands-free calls
- Up to 33ft range¹
- Aux-in port
- Voice assistant compatible
(works with Amazon Alexa, Siri® and Google Assistant™)³

What the Unit Ships With

Wireless speaker
USB charging cable
AUX-in cable
Quick start guide

- (1) IPX5 - Withstands water splashing from any direction.
Not designed to work while submerged underwater. Do not use while swimming, or subject it to pressurized streams of water. Dust Protected.
(2) Device, signal strength and network dependent.
(3) Operating system dependent.

Shipping Information

Black

UPC: 816479017049
ITF: 10816479017046
EAN: 5012786038677
Outer EAN: 5012786038684

Red

UPC: 816479017377
ITF: 10816479017374
EAN: 5012786040618
Outer EAN: 5012786040625

Royal Blue

UPC: 816479017384
ITF: 10816479017381
EAN: 5012786040625
Outer EAN: 5012786039360

Model: SP009

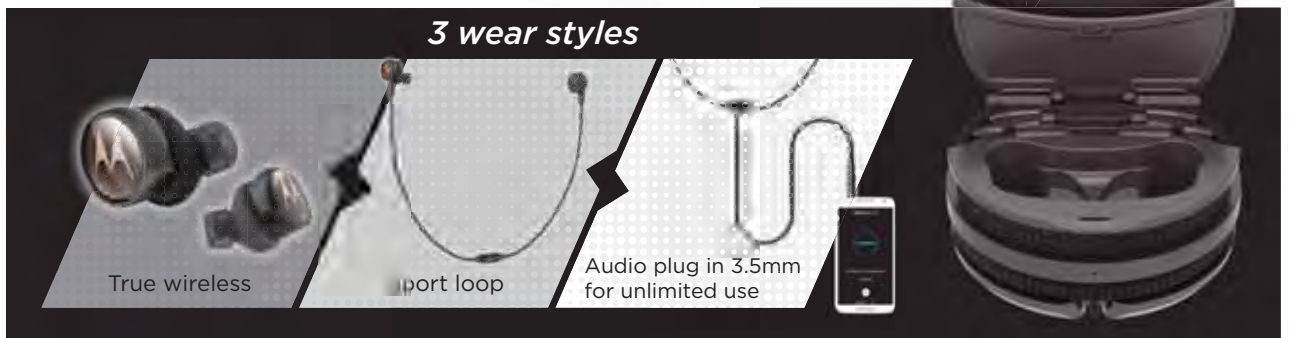
Box Type: Window
QTY/CTN: 10
Speaker: TBC
Gross Weight: 0.26kg
Gift Box: TBC
Gross Weight: TBC
Outer Carton: TBC
Gross Weight: 2.97kg



motorola

TECH3

3-in-1 True Wireless Headphones



Unlock 70,000+ Amazon Alexa skills with Hubble Connected™



Up to 18 hours
playtime with
the
charging case²



Fast charging



IPX5
Waterproof¹



Built-in
microphone



Unlimited Playtime. Zero Limitations.

Combining the best of true wireless and the best of sports and wired headphones together to revolutionize the listening experience of users with different lifestyles. Tech3, integrated with Tri-X patented pioneer technology, is a 3-in-1 headphone that can be used as true wireless, sport loop, or audio plug-in headphones. It also features a magnetic charging case with an integrated cable management system. Fusing the hybrid solution boasts a 7-hour playtime on the buds, 11 hours on the case, 15-minute fast charging for 3-hour playtime, and the best sound and voice quality. Tech3 brings together the best of both worlds and the unlimited possibilities of supreme flexibility.



Features

- Earbuds 7 hours playtime with 11 hours charging case²
- Waterproof IPX5¹
- Cable management case
- Turbo charge 3 hrs in 15 mins
- Unlimited playtime with audio plug in
- Smart voice assistant³
(works with Amazon Alexa, Siri® and Google Assistant™)
- Microphone for handsfree calls
- Bluetooth® 5.0

What the Unit Ships With

True Wireless Earbuds
Portable Charging Case
Ear Buds Set
3.5mm Connection Cable
3-pin Look Style Cable
Usb Charging Cable
Quick Start Guide

- (1) IPX5 - Withstands water splashing from any direction.
Not designed to work while submerged underwater. Do not use while swimming, or subject it to pressurized streams of water. Dust Protected.
(2) Device, signal strength and network dependent.
(3) Operating system dependent.

Shipping Information

Model: TBC

Color: TBC

UPC: TBC

ITF: TBC

Box Type: TBC

QTY/CTN: TBC

Earbud: TBC

Gross Weight: TBC

Charging Case: TBC

Gross Weight: TBC

Gift Box: TBC

Gross Weight: TBC

Outer Carton: TBC

Gross Weight: TBC





motorola

VERVEBUDS 800

Crystal Clear Sound Smart True Wireless Headphones



Wireless Charge not included

Unlock 70,000+ Amazon Alexa skills with Hubble Connected™



IPX4
water resistant¹



18h
play time
with the
charging case²



Full control
on
either bud

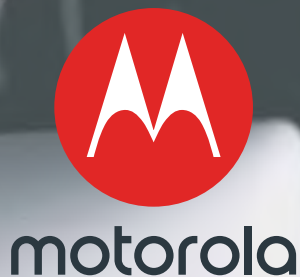


Dual-mic for
crystal
clear calls



The Ultimate Earbuds Engineered For Superior Listening Experience.

Intelligently crafted combined with the best aesthetic design to fit everyone with different lifestyles. Go anywhere and do anything with Motorola's most smart and true wireless headphones. Verve Buds 800's sleek and smart design features 6-hours playtime on buds and 12-hours on the case, perfect sound quality with dual mic for crystal clear calls, handsfree calling, and faultless compatibility with Alexa, Siri, and Google Assistant. It also features EQ sound curve via the VerveLife app for a personalised listening experience. Adding to its comprehensive design and features is its IPX4 waterproof certification that eases you from concerns of water damage. It also has a super compact wireless Qi charging case that you can take anywhere with you. Verve Buds 800 breaks down all the barriers of wireless possibilities making it the perfect Bluetooth earbuds for you.



Features

- Waterproof IPX4¹
- Dual-mic technology for crystal clear calls
- EQ App for customize your own preference sound profile
- Earbuds 6 hours playtime with 12 hours charging case²
- Wireless charging case only
- Rich stereo sound
- Smart voice assistant³
(works with Amazon Alexa, Siri® and Google Assistant™)
- Automatic connection to smart device
- Use either bud as a mono Bluetooth headset
- Up to 33 ft (10 m) range

What the Unit Ships With

True Wireless Earbuds
Portable Charging Case
Earbuds Set
USB Charging Cable
Quick Start Guide

(1) IPX4 - Withstands water splashing from any direction. Not designed to work while submerged underwater. Do not use while swimming, or subject it to pressurized streams of water. Dust Protected.

(2) Device, signal strength and network dependent.

(3) Operating system dependent.

Shipping Information

Black

UPC: 816479017094

ITF: 10816479017091

EAN: 501278603 8776

Outer EAN: 5012786038783

White

UPC: 816479017100

ITF: 10816479017107

EAN: 5012786038790

Outer EAN: 5012786038806

Model: SH037

Box Type: Box with Flip

QTY/CTN: 10

Headset Dimension: L27mm x W16.5mm x H43.6mm
(L1.06" x W0.65" x H1.72"),

Case: L71.7mm x W55.6mm x H24.3mm
(L2.82" x W2.19" x H0.96")

Gross Weight: 50g

Gift Box: L100mm x W180mm x H42mm
(L3.94" x W7.09" x H1.65")

Gross Weight: 0.15 lbs

Outer Carton: L225mm x W230mm x H210mm
(L8.86" x W9.06" x H8.27")

Gross Weight: 2.2 lbs





motorola

VERVEBUDS 400

Sleek, Innovative True Wireless Earbuds



**Full control
on either bud**



**Rich sound
quality**



**Use either as
a mono Bluetooth
headset**



**Unlock 70,000+ Amazon Alexa
skills with Hubble Connected™**

Wireless Music Simplified.

The VerveBuds 400 True Wireless Earbuds compliment any personality and lifestyle with its sleek and innovative look. These wire-free earbuds give you a light-weight, secure fit with rich sound quality, so you can listen with no distractions. Created to work with your smartphone, tablet or computer, they give you the freedom of listening anytime, anywhere. Stay connected all day with up to 12 hours of playtime and charge them anywhere using the portable charging case (included). Designed to give you full control, on both earbuds, so you can use it as a mono Bluetooth headset or share the experience with a friend and listen together. Go hands-free with the built-in mic and receive full support from the compatible voice assistants Siri, Google Now and Alexa. The VerveBuds 400. Wireless Music Simplified.



Features

- Bluetooth® v5.0
- Waterproof IPX6¹
- Up to 12 hours playtime with charging case²
- Use either bud as a mono Bluetooth headset
- Full control on either bud
- Rich sound quality
- Smart voice assistant³
(works with Amazon Alexa, Siri® and Google Assistant™)

What the Unit Ships With

True Wireless Earbuds
Portable Charging Case
Earbuds Set
USB Charging Cable
Quick Start Guide

(1) Withstands water splashing from any direction. Not designed to work while submerged underwater. Do not use while swimming, or subject it to pressurized streams of water. Dust Protected.

(2) Operating system dependent.

(3) Device, signal strength and network dependent.

Shipping Information

Black

EAN: 5012786040564

Outer EAN: 5012786039247

Royal Blue

EAN: 5012786040595

Outer EAN: 5012786039285

Rose Gold

EAN: 5012786040571

Outer EAN: 5012786040588

Model: SH031

Box Type: Closed Box

QTY/CTN: 10

Earbud: L 0.51" x W 0.51" x H 0.91"

Gross Weight: 0.01 lbs.

Charging Case: L 1.22" x W 1.22" x H 3"

Gross Weight: 0.11 lbs.

Gift Box: L 3.94" x W 1.65" x H 3.94"

Gross Weight: 0.42 lbs.

Outer Carton: L 8.86" x 9.06" x 8.27"

Gross Weight: 4.8 lbs.



motorola

VERVEBUDS 300

Compact True Wireless Earbuds



Full control
on either bud



Rich sound
quality



Use either as
a mono Bluetooth
headset

Unlock 70,000+ Amazon Alexa
skills with Hubble Connected™



Wireless Music Simplified.

The VerveBuds 300 True Wireless Earbuds offer superior sound quality exactly when you need it. These wire-free earbuds give you a light-weight, secure fit with rich sound quality, so you can listen with no distractions. Created with splashproof protection and compatible to work with any smartphone, tablet or computer, they give you the freedom of listening anytime, anywhere, rain or shine. Stay connected all day with up to 10 hours of playtime and charge them anywhere using the portable charging case (included). Designed to give you full control, on both earbuds, so you can use it as a mono Bluetooth headset or share the experience with a friend and listen together. Go hands-free with the built-in mic and receive full support from the compatible voice assistants Siri, Google Now and Alexa. The VerveBuds 300. Wireless Music Simplified.



Features

- Up to 10 hours playtime with charging case (5 hours per charge)⁽¹⁾
- Use either bud as a mono Bluetooth headset
- Full control on either bud
- Rich sound quality
- Voice assistant compatible (works with Amazon Alexa, Siri[®] and Google Assistant[™])⁽²⁾
- Bluetooth[®] 5.0 technology

What the Unit Ships With

True wireless earbuds
Portable charging case
Ear buds set
USB charging cable
Quick start guide

(1) Device, signal strength and network dependent
(2) Operating system dependent

Shipping Information

Black

UPC: 816479017537
ITF: 10816479017534
EAN: 5012786039841
Outer EAN: 5012786039858

Royal Blue

UPC: 816479017544
ITF: 10816479017541
EAN: 5012786039865
Outer EAN: 5012786039872

Rose Gold

UPC: 816479017551
ITF: 10816479017558
EAN: 5012786039889
Outer EAN: 5012786039896

Model: SH032

Box Type: Window Box
QTY/CTN: 10
Headset: TBD
Gross Weight: TBD
Gift Box: 3.94" x 7.01" x 1.65"
Gross Weight: 0.3 lbs
Outer Carton: 8.86" x 9.06" x 8.27"
Gross Weight: 4.25 lbs

Red

UPC: 816479017568
ITF: 10816479017565
EAN: 5012786039902
Outer EAN: 5012786039919





motorola

VERVEBUDS 200

2-in-1 Wireless Sport Earbuds



Up to 10hrs
of playtime¹



Waterproof²



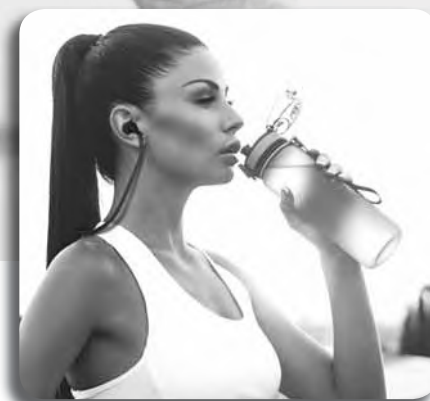
Rich stereo
sound

Unlock 70,000+ Amazon Alexa
skills with Hubble Connected™



Wireless Music Simplified.

The VerveBuds 200 2-in-1 Wireless Sport Earbuds focus on what matters most – staying connected on the move. These wire-free earbuds give you a light-weight, secure fit with rich stereo sound, so you can listen with no distractions. Created with waterproof protection and designed to work with any smartphone, tablet or computer, they give you the freedom of listening anytime, anywhere, rain or shine. Stay connected all day with up to 10 hours of playtime and charge them anywhere using the portable charging case (included). For those who want added security, transform your wearing style to a loop-style headset by attaching the lanyard (included) to the earbuds. Go hands-free with the built-in mic and receive full support from the compatible voice assistants Siri, Google Now and Alexa. The VerveBuds 200. Wireless Music Simplified.



Features

- Up to 10 hours playtime with charging case (3 hours per charge)¹
- IPX5 waterproof²
- Lightweight & secure fit
- Rich stereo sound
- Voice assistant compatible (works with Amazon Alexa, Siri[®] and Google Assistant[™])³
- Automatic connection to smart device
- Microphone for handsfree calls
- Anti-lost neck strap included
- Bluetooth[®] 5.0

What the Unit Ships With

True wireless earbuds
Portable charging case
Ear buds set
USB charging cable
Quick start guide

- (1) Device, signal strength and network dependent
(2) Can resist a sustained, low-pressure water jet spray. Not designed to work while submerged underwater. Do not use while swimming, or subject it to pressurized streams of water.
(3) Operating system dependent

Shipping Information

Black

UPC: 816479017292
ITF: 10816479017299
EAN: 5012786039179
Outer EAN: 5012786039186

Royal Blue

UPC: 816479017308
ITF: 10816479017305
EAN: 5012786039193
Outer EAN: 5012786039209

Burgundy Red

UPC: 816479017513
ITF: 10816479017312
EAN: 5012786039216
Outer EAN: 5012786039223

Model: SH036

Box Type: Window Box
QTY/CTN: 10
Headset: TBD
Gross Weight: TBD
Gift Box: 3.94" x 7.01" x 1.65"
Gross Weight: 0.3 lbs
Outer Carton: 8.86" x 9.06" x 8.27"
Gross Weight: 4.25 lbs





motorola

VERVE BUDS 110

Compact Water-Resistant
True Wireless Headphones



Unlock 70,000+ Amazon Alexa
skills with Hubble Connected™



Waterproof
(IPX4)¹



Up to 4 hours
play time
with 8 hours
charging case²



Touch control
on both
earbuds



Smart voice
assistant³



Wireless Music Simplified.

The VerveBuds 110 Compact Water-Resistant True Wireless Headphones focus on what matters most – staying connected on the move. These wire-free earbuds give you a light-weight, secure fit with rich stereo sound, so you can listen with no distractions. Created with waterproof protection and designed to work with any smartphone, tablet or computer, they give you the freedom of listening anytime, anywhere, rain or shine. Stay connected all day with up to 12 hours of playtime and charge them anywhere using the portable charging case (included). Go hands-free with the built-in mic and receive full support from the smart voice assistants Siri®, Google Now and Alexa. The VerveBuds 110. Wireless Music Simplified.



Features

- Bluetooth® v5.0
- Water-resistant, compact design
- Waterproof IPX4¹
- Use either earbud as a mono Bluetooth headset
- Up to 4 hours play time with 8 hours charging case²
- Built-in mic for hands-free calls
- Up to 33ft range²
- Smart voice assistant³
(works with Amazon Alexa, Siri® and Google Assistant™)

What the Unit Ships With

True Wireless Earbuds
Portable Charging Case
Earbuds Set
USB Charging Cable
Quick Start Guide

- (1) IPX4 - Withstands water splashing from any direction.
Not designed to work while submerged underwater. Do not use while swimming, or subject it to pressurized streams of water. Dust Protected.
(2) Operating system dependent.
(3) Device, signal strength and network dependent.

Shipping Information

Model: SH039BK

Color: Matte Black

UPC: 816479017711

ITF: 10816479017718

Box Type: Closed Box

QTY/CTN: 20

Earbud: L 0.51" x W 0.51" x H 0.91"

Gross Weight: 0.01 lbs.

Charging Case: L 0.59" x W 0.59" x H 3.62"

Gross Weight: 0.06 lbs.

Gift Box: L 4.33" x W 1.36" x H 4.33"

Gross Weight: 0.30 lbs.

Outer Carton: L 11.46" x W 7.95" x H 1.89"

Gross Weight: 7.1 lbs.





motorola

VERVEBUDS 100

Simple Earbuds For Your Modest Lifestyle



14h
play time
with the
charging case²



Bluetooth® 5.0
technology



IPX5
Waterproof¹



Unlock 70,000+ Amazon Alexa
skills with Hubble Connected™

Simple Earbuds For Your Modest Lifestyle.

Experience true wireless without breaking the bank. Verve Buds 100 is the wireless headphone that gives you the best value for your money. It features 5-hours playtime on the buds + 9-hours on the case, superior sound quality, handsfree calling, and faultless adaptability with voice commands such as Alexa, Siri, and Google Assistant. Its ergonomic design and IPX5 waterproof and sweatproof certification also allow you to move freely and comfortably without the worries of damaging it.



motorola



Features

- 14-hours playtime with the charging case²
- Bluetooth 5.0
- IPX5 Waterproof¹
- Smart voice assistant³
 - Alexa, Siri, Google Assistant

What the Unit Ships With

True Wireless Earbuds
Portable Charging Case
Ear Buds Set
Usb Charging Cable
Quick Start Guide

- (1) IPX5 - Withstands water splashing from any direction.
Not designed to work while submerged underwater. Do not use while swimming, or subject it to pressurized streams of water. Dust Protected.
(2) Device, signal strength and network dependent.
(3) Operating system dependent.

Shipping Information

Black

UPC: TBC
ITF: TBC
EAN: TBC
Outer EAN: TBC

Model: TBC

Box Type: TBC
QTY/CTN: TBC
Headset Dimension: TBC
Headset Weight: TBC
Gift Box: TBC
Gross Weight: TBC
Outer Carton: TBC
Gross Weight: TBC
Net weight: TBC
Main material used for device and thickness: TBC
Battery included: TBC
Battery type and battery weight: TBC



motorola

VERVE LOOP 105 SPORT

Wireless Loop Style Bluetooth Headphones



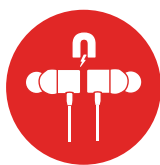
Unlock 70,000+ Amazon Alexa skills with Hubble Connected™



IPX5
water resistant¹



8h
music play time²



Tangle-free
magnetic
design



Microphone for
handsfree
calls



Boundless Movements For A Boundless Listening Experience.

Feel the freedom of boundless movements while on an uninterrupted listening experience with Verve Loop 105's ultra-lightweight and tangle-free design. Its features include its flexible neckband for a secure fit and magnetic earbuds that lock together to avoid misplacing it. Verve Loop 105 prides itself as the perfect Bluetooth headphones that deliver supreme sound quality. It's also equipped with 8-hours playtime, a built-in microphone for handsfree calling, and IPX waterproof certification for the active person in you.



Features

- Super light
- IPX5 waterproof¹
- 8H music play time²
- Smart voice assistant³
(works with Amazon Alexa, Siri® and Google Assistant™)
- Well fitted style, perfect for sports
- Magnet earbuds
- Stabilizer for extra secure fit

What the Unit Ships With

Wireless Earbuds
3 Ear Gels
3 Stabilizers
Usb Charging Cable
Quick Start Guide

- (1) IPX5 - Withstands water splashing from any direction.
Not designed to work while submerged underwater. Do not use while swimming, or subject it to pressurized streams of water. Dust Protected.
(2) Device, signal strength and network dependent.
(3) Operating system dependent.

Shipping Information

Black

UPC: TBC

ITF: TBC

EAN: 5012786040977

Outer EAN: 5012786040984

Model: SH051

Box Type: Colour Box

QTY/CTN: 20

Unit Dimension: L12mm x W16.8mm x H17.3mm, cable length 65mm
(L0.47" x W0.66" x H0.68", cable length 2.56")

Gross Weight: 14g

Gift Box: L110mm x W110mm x H36.5mm
(L4.33" x W4.33" x H1.44")

Gross Weight: 135g

Outer Carton: L291mm x W202mm x H248mm
(L11.5" x W7.95" x H9.76")

Gross Weight: 2.9kg

Net weight: 2.7kg

TPE Line Height:

H3.5mm x W1.45mm x L600mm (520mm+80mm)
(H0.14" x W0.06" x L23.6" (20.5"+3.15"))

Battery included: Yes

Battery type and battery weight:

Soft-packed lithium battery 55mAh x 2/Weight 2g x 2



motorola

VERVE RAP 105 SPORT

Wireless Bluetooth Earbuds With Back Band Wear-style



Unlock 70,000+ Amazon Alexa
skills with Hubble Connected™



IPX5
water resistant¹



8h music
play time²



Super light



Microphone for
handsfree
calls



Unrestricted Listening While On The Move.

Unbind yourself from daily activity restrictions while on headphones. Verve Rap 105 takes you in on the unrestricted capabilities of Bluetooth headphone technology. Free yourself from the worries of unsecured fit with its flexible neckband and sleek earbud-style back band, and relieve yourself from the concerns of losing it with its magnetic earbuds that lock together when it's not in use. Verve Rap 105 features an 8-hour playtime, IPX5 waterproof feature, superb sound quality, and handsfree calling capability. It is also compatible with Siri, Alexa, and Google Assistant voice commands, that lets you control what you listen to while on the go.



Features

- Super light
- Waterproof IPX5¹
- 8H music play time²
- Superb sound quality powered by 15mm speaker driver
- Phone alert vibration
- Secure fit
- Magnet earbuds
- Sleek style
- Makes life simpler with voice command³
 - Alexa, Siri, Google Assistant

Shipping Information

Black

UPC: TBC

ITF: TBC

EAN: 5012786040939

Outer EAN: 5012786040946

Model: SH051

Box Type: Colour Box

QTY/CTN: 10

Unit Dimension:

L20mm x W17mm x H28mm (earbud), cable length 68cm
(L0.79" x W0.67" x H1.10" earbud, cable length 26.8")

Gross Weight: 18g

Gift Box: L170mm x W270mm x H42mm
(L6.69" x W10.6" x H1.65")

Gross Weight: 0.15kg

Outer Carton: L370mm x W240mm x H240mm
(L14.6" x W9.45" x H9.45")

Gross Weight: 2kg

Net weight: 1.5kg

TPE Line Height:

Neck Band TPE H4.5mm x W2.0mm x L280mm/Headphone Lineφ1.8
(Neck Band TPE H0.18" x W0.08" x L11.0"/Headphone Lineφ1.8)

Battery included: Yes

Battery type and battery weight:

Soft-packed lithium battery135mAh/Weight3.0g

What the Unit Ships With

Headphones

Ear Buds Set (S, M, L)

Usb Charging Cable

Quick Start Guide

(1) IPX5 - Withstands water splashing from any direction.

Not designed to work while submerged underwater. Do not use while swimming, or subject it to pressurized streams of water. Dust Protected.

(2) Device, signal strength and network dependent.

(3) Operating system dependent.



motorola

ESCAPE 800ANC

Wireless Active Noise-Canceling Headphones



Unlock 70,000+ Amazon Alexa skills with Hubble Connected™



Active noise cancellation



Bluetooth® 4.0 up to 12m range



Up to 12 hours play time¹

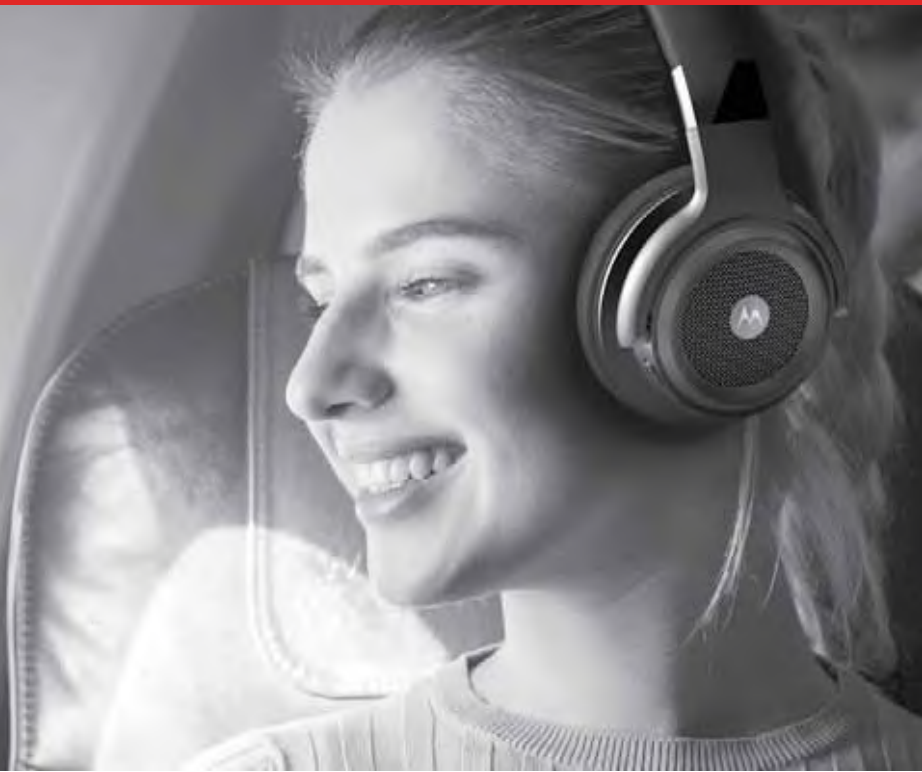


Waterproof (IPX4)²



Listen Without Distractions.

Designed with active noise cancelling technology that detects and cancels out ambient noise, leaving you to immerse in the music as the world around you fades away. Motorola ANC Basic headphones make a perfect companion for your daily commute. Enjoy complete freedom as you go about your day with these wireless headphones that work with Amazon™ Alexa. Explore thousands of skills and services with one-touch access to Amazon™ Alexa. Stream your favourite playlists from Amazon™ Music or other music service platforms like TuneIn Radio, find a bank or manage your to-do list.



Features

- Advanced active noise cancellation
- Superior sound quality with enhanced bass output
- Up to 12h playtime (with ANC on)¹
- Bluetooth® 4.0 up to 20m range
- Works with Amazon Alexa, Siri® & Google Assistant™
- Microphone for handsfree calls
- Waterproof (IPX4)²
- Ergonomically -designed, soft ear cushion for extra comfort

What the Unit Ships With

Wireless Advanced Active Noise-Cancelling Headphones
3.5mm Cable
Charging Cable
User's Guide

(1) When there is a clear line of sight between headphones and Bluetooth® enabled audio device. Any obstruction between both units will reduce the range significantly.

(2) IPX4 - Withstands water splashing from any direction. Not designed to work while submerged underwater. Do not use while swimming, or subject it to pressurized streams of water.

Shipping Information

Black

UPC: 816479016431
ITF: TBC
EAN: TBC
Outer EAN: TBC

Model: SH043 BK

Box Type: Closed
QTY/CTN: 5
Headset Dimensions: L170mm x W185mm x H90mm
(L6.69" x W7.28" x H3.54")
Headset Weight: 264g
Gift Box: L215.9mm x W88.9mm x H234.95mm
(L8.50" x W3.50" x H9.25")
Gross Weight: 0.676kg (1.49 lbs.)
Outer Carton: L482.6mm x W228.6mm x H266.7mm
(L19.00" x W9.00" x H10.50")
Gross Weight: 3.379kg (7.45 lbs.)
Net weight: TBC
Main material used for device and thickness: TBC
Battery included: TBC
Battery type and battery weight: TBC





motorola

ESCAPE 500ANC

Wireless Active Noise-Canceling Headphones



Unlock 70,000+ Amazon Alexa skills with Hubble Connected™



Active noise cancellation



Bluetooth® 4.0 up to 12m range



Up to 12 hours play time¹



Waterproof (IPX4)²



Listen Without Distractions.

Designed with active noise cancelling technology that detects and cancels out ambient noise, leaving you to immerse in the music as the world around you fades away. Motorola ANC Basic headphones make a perfect companion for your daily commute. Enjoy complete freedom as you go about your day with these wireless headphones that work with Amazon™ Alexa. Explore thousands of skills and services with one-touch access to Amazon™ Alexa. Stream your favourite playlists from Amazon™ Music or other music service platforms like TuneIn Radio, find a bank or manage your to-do list.



motorola



Features

- Active noise cancellation
- Clear, rich, quality sound
- Bluetooth® 4.0 up to 12m range
- Up to 12 hours playtime (with ANC on)¹
- Works with Amazon Alexa, Siri® & Google Assistant™
- Microphone for handsfree calls
- Waterproof (IPX4)²
- Cable included for use if battery runs out

What the Unit Ships With

Wireless Active Noise-Cancelling Headphones
3.5mm Cable
Charging Cable
User's Guide

(1) When there is a clear line of sight between headphones and Bluetooth® enabled audio device. Any obstruction between both units will reduce the range significantly.

(2) IPX4 - Withstands water splashing from any direction. Not designed to work while submerged underwater. Do not use while swimming, or subject it to pressurized streams of water.

Shipping Information

Black

UPC: 816479016417

ITF: TBC

EAN: TBC

Outer EAN: TBC

Model: SH040

Box Type: Closed

QTY/CTN: 5

Headphones Dimension: TBC

Gross Weight: TBC

Gift Box: L215.9mm x W215.9mm x H235.0mm
(L8.50" x W8.50" x H9.25")

Gross Weight: 0.68kg (1.49 lbs.)

Outer Carton: L228.6mm x W482.6mm x H266.7mm
(L9.00" x W19.00" x H10.50")

Gross Weight: 3.38kg (7.45 lbs.)

Net weight: TBC

Main material used for device and thickness: TBC

Battery included: TBC

Battery type and battery weight: TBC





motorola

SQUADS 300

Bluetooth Headphones For Kids



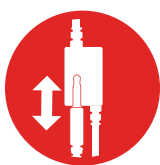
Unlock 70,000+ Amazon Alexa skills with Hubble Connected™



15 Hours
play time²



Bluetooth® 5.0
technology



Splitter for
sharing



Anti-allergic
cushion



Wireless And Safe Listening For Kids.

Breakaway from tangled cords with Squads 300 play friendly wireless earphone. Its durable design and fun colours are equipped with Bluetooth wireless technology with 15-hour playtime per charge. It comes with a 3.5 mm detachable cord for no power use and a built-in microphone for hands-free calling. This headphone is designed to limit an 85 dB safe volume for kids and encourage easy sharing as you'll be able to connect up to 4 headphones at once. The smart features and affordable price makes it the ideal over-the-ear headphone for the young ones, and the young-at-heart!



Features

- For ages 3 or above
- Splitter for sharing
- Anti-allergic cushion (BPA free)
- Maximum volume at 85dB
- Built to stand the test of time
- Premium quality kids branded headphones at most affordable price range
- Safe volume limit for kids (up to 85 dB)
- Shockproof, flexible and durable quality plastic body
- Built-in microphone for hands-free calling
- 3.5mm detachable cord for no power use
- Ultra lightweight and foldable for travel
- Easy sharing upto four headphones using the splitters

What the Unit Ships With

Kids Wired Headphones
3.5mm Cable
Charging Cable
User Guide

Shipping Information

Blue

UPC: 816479013287
ITF: 10816479013284
EAN: 5012786040816
Outer EAN: 5012786040823

Pink

UPC: 816479013270
ITF: 10816479013277
EAN: 5012786040793
Outer EAN: 5012786040809

Model: SH057

Box Type: Box with Flip
QTY/CTN: 10
Headset Dimensions: TBC
Headset Weight: TBC
Gift Box: TBC
Gross Weight: TBC
Outer Carton: TBC
Gross Weight: TBC
Net weight: TBC
Main material used for device and thickness: TBC
Battery included: TBC
Battery type and battery weight: TBC



motorola

ESCAPE 220

**Aesthetically Designed Powerful
Over-the-ear Bluetooth Headphones**



**Unlock 70,000+ Amazon Alexa
skills with Hubble Connected™**



**23 Hours
play time¹**



**HD Sound
with 40mm
drivers**



**Microphone
for handsfree
calls**



**Bluetooth® 5.0
technology**



Superior Battery Life For Uninterrupted Music All Day.

The best travel over-the-ear headphones with the finest features. Escape 220 is designed to produce superb sound quality, and runs on Bluetooth 5.0 for lesser energy consumption, delivering a 23-hour music playtime and 24-hour talk time capability that lets you in on the world of uninterrupted music, anytime and anywhere. This wireless headphone also comes with a 3.5 mm detachable cord for no power use. Its attractive aesthetics also features a foldable design and cushioned ear caps for all-day comfort, making it your ultimate headphone travel buddy.



Features

- 23 hours music playtime¹
- 24 hours talk time
- Great value for outstanding design
- Lightweight and foldable for travel
- 40mm driver for powerful sound
- Voice command²
 - Alexa, Siri, Google Assistant

What the Unit Ships With

In Ear Headphones
3.5mm Cable
Quick Start Guide

(1) Device, signal strength and network dependent.
(2) Operating system dependent.

Shipping Information

Black

UPC: TBC
ITF: TBC
EAN: TBC
Outer EAN: TBC

Red

UPC: TBC
ITF: TBC
EAN: TBC
Outer EAN: TBC

White

UPC: TBC
ITF: TBC
EAN: TBC
Outer EAN: TBC

Model: SH057

Box Type: Colour Box
QTY/CTN: 12

Unit Dimensions: L182mm x W83mm x H190mm
(L7.17" x W3.27" x H7.48")

Gross Weight: 196.8g

Gift Box: L140mm x W90mm x H185mm
(L5.51" x W3.54" x H7.28")

Gross Weight: 0.105kg

Outer Carton: L305mm x W390mm x H310mm
(L12.0" x W15.4" x H12.2")

Gross Weight: 3.63kg

Net weight: 2.36kg

Main material used for device and thickness: Plastic ABS, 1.5mm (0.06")

Battery included: Yes

Battery type and battery weight: Lithium battery, 11.5g



motorola

PULSE ESCAPE+

Water Resistant, Wireless
Over-Ear Headphones



Unlock 70,000+ Amazon Alexa
skills with Hubble Connected™



Water & Dust
Resistant¹



Noise
Isolation



Up to 20
hours
play time²



40mm
Drivers



Studio Quality Performance. Wireless Freedom.

Motorola Pulse Escape+ offers studio quality performance and wireless freedom. These over-ear headphones are equipped with Bluetooth 4.1 technology, allowing you to listen to music or podcasts wire-free. Premium finishes and a water resistant design let you take them wherever you go, worry-free. Powerful 40mm drivers and noise isolation provide superb sound, while the 20 hours of playtime and foldable ear cups get you through your day. Plus, a built-in mic allows you to take and make calls hands-free, making Pulse Escape+ perfect for all-day use.



Features

- Bluetooth 4.1 technology
- IP54 water and dust resistant¹
- Noise isolation blocks out unwanted background noise
- Powerful, oversized 40mm drivers provide superb bass-driven sound
- Up to 20 hours playtime²
- Built-in mic for hands-free calling
- Touch controls on ear cups
- Integrated multipoint technology to connect two devices at once
- Lightweight and foldable for travel
- Up to 60ft range³
- 3.5mm AUX in jack
- Voice assistant compatible (works with Amazon Alexa, Siri® and Google Assistant™)⁴

What the Unit Ships With

Wireless over-ear headphones
3.5mm cable
Charging cable
User's guide

(1) IP54 - Withstands water splashing from any direction. Not designed to work while submerged underwater. Do not use while swimming, or subject it to pressurized streams of water. Dust Protected.

(2) Battery time is approximate and depends on network configuration, signal strength, operating temperature, voice and data mix, and features selected.

(3) Extended range when paired with a BT Class 1 phone. All features, functionality, and other product specifications are subject to change without notice or obligation.

(4) Operating system dependent

Shipping Information

Black

UPC: TBC

ITF: TBC

EAN: TBC

Outer EAN: TBC

White

UPC: TBC

ITF: TBC

EAN: TBC

Outer EAN: TBC

Camo

UPC: TBC

ITF: TBC

EAN: TBC

Outer EAN: TBC

Model: TBC

Box Type: Closed

QTY/CTN: TBC

Headset Dimensions: TBC

Headset Weight: TBC

Gift Box: L185mm x W200mm x H84mm
(L7.28" x W7.87" x H3.31")

Gross Weight: 0.42kg (190.51 lbs.)

Outer Carton: L440mm x W205mm x H230mm
(L17.3" x W8.07" x H9.06")

Gross Weight: 2.4kg (1088.62 lbs.)

Net weight: TBC

Main material used for device and thickness: TBC

Battery included: TBC

Battery type and battery weight: TBC





PULSE ESCAPE

Wireless Over-Ear Headphones



Unlock 70,000+ Amazon Alexa skills with Hubble Connected™



Noise Isolation



Up to 10 hours play time¹



40mm Drivers



Built-in Mic



Studio Quality Performance. Wireless Freedom.

Motorola Pulse Escape offers studio quality performance and wireless freedom. These over-ear headphones are equipped with Bluetooth 4.1 technology, allowing you to listen to music or podcasts wire-free. Powerful 40mm drivers and noise isolation provide superb sound, while the 10 hours of playtime and foldable ear cups get you through your day. Plus, a built-in mic allows you to take and make calls hands-free, making Pulse Escape perfect for all-day use.



Features

- Bluetooth 4.1 technology
- Noise isolation blocks out unwanted background noise
- Powerful, oversized 40mm drivers provide superb bass-driven sound
- Up to 10 hours playtime¹
- Built-in mic for hands-free calling
- Touch controls on ear cups
- Integrated multipoint technology to connect two devices at once
- Lightweight and foldable for travel
- Up to 60ft range²
- 3.5mm AUX in jack
- Voice assistant compatible (works with Amazon Alexa, Siri® and Google Assistant™)³

What the Unit Ships With

Wireless over-ear headphones
3.5mm cable
Charging cable
User's guide

(1) Battery time is approximate and depends on network configuration, signal strength, operating temperature, voice and data mix, and features selected.

(2) Extended range when paired with a BT Class 1 phone. All features, functionality, and other product specifications are subject to change without notice or obligation.

(3) Operating system dependent

Shipping Information

Black

UPC: TBC
ITF: TBC
EAN: TBC
Outer EAN: TBC

White

UPC: TBC
ITF: TBC
EAN: TBC
Outer EAN: TBC

Red

UPC: TBC
ITF: TBC
EAN: TBC
Outer EAN: TBC

Model: TBC

Box Type: Closed
QTY/CTN: TBC
Headset Dimensions: TBC
Headset Weight: TBC
Gift Box: L185mm x W200mm x H84mm
(L7.28" x W7.87" x H3.31")
Gross Weight: 0.42kg (190.51 lbs.)
Outer Carton: L440mm x W205mm x H230mm
(L17.3" x W8.07" x H9.06")
Gross Weight: 2.4kg (1088.62 lbs.)
Net weight: TBC
Main material used for device and thickness: TBC
Battery included: TBC
Battery type and battery weight: TBC





motorola

PULSE 120 BASS

Corded Over-the-ear Headphones



Unlock 70,000+ Amazon Alexa skills with Hubble Connected™



Enhanced
bass with
13.6mm drivers



Microphone
for handsfree
calls



Ultra
lightweight
and foldable
for travel



Voice assistant
control¹



Take Your Music Wherever You Go.

Uninterrupted listening has never been hassle-free before with Pulse 120. Equipped with a 40 mm driver to deliver impressive sound quality and enhanced bass, Pulse 120 takes away the troubles of charging with its 3.5mm cord that also features a built-in microphone for hands free calling. Ideated to be packed anywhere with you, its foldable design also features cushioned ear caps for all-day comfort, making it your ideal travel buddy.



Features

- Bluetooth® v5.0
- Ultra light weight and foldable for travel
- 3.5mm cord with built-in microphone for hands-free calling
- Makes life simpler with voice command¹
 - Alexa, Siri, Google Assistant

What the Unit Ships With

On Ear Headphones
3.5mm Cable
Quick Start Guide

(1) Operating system dependent.

Shipping Information

Black

UPC: 816479013300
ITF: 10816479013307
EAN: 5012786040854
Outer EAN: 5012786040861

White

UPC: 816479013294
ITF: 10816479013291
EAN: 5012786040830
Outer EAN: 5012786040847

Model: SH060

Box Type: Box
QTY/CTN: 10
Headset Dimensions: L182mm x W83mm x H190mm
(L7.17" x W3.27" x H7.48")
Headset Weight: 168.4g
Gift Box: L140mm x W90mm x H185 mm
(L5.51" x W3.54" x H7.28")
Gross Weight: 0.105kg
Outer Carton: L305mm x W390mm x H310mm
(L12.0" x W15.4" x H12.2")
Gross Weight: 3.28kg
Net weight: 2.02kg
Main material used for device and thickness: plastic ABS, 1.5mm (0.06")
Battery included: No
Battery type and battery weight: N/A





motorola

SQUADS 200

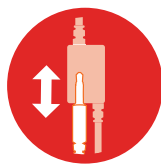
Play Friendly Kids Headphones



Safe volume
limit for kids
(up to 85 dB)



Flexible and
durable



Audio splitter
for easy sharing



Unlock 70,000+ Amazon Alexa
skills with Hubble Connected™

Safe Listening For Young Ears.

Little ears might be delicate but little people can be anything but, especially when listening to their favorite tracks. Motorola's new Squads headphones, for children aged 3-8, are specially designed to protect a child's developing hearing with an 85dB safe audio limit and anti-allergic cushion pads but are rugged enough to withstand their developing strength. Adjustable headband to grow with your child.



Features

- For ages 3 or above
- Easy sharing upto four headphones using the splitters
- Ultra light weight and foldable for travel
- 3.5mm cord with built-in microphone for hands-free calling
- DIY decorative sticker with colour pencils
- Volume limited to 85dB
- Built-in audio AUX input for sharing (at Earcup)
- Shockproof, flexible and durable quality plastic body
- Play friendly robust headphones

What the Unit Ships With

Kids Wired Headphones
3.5mm Cable
Charging Cable
User's Guide
Stickers

Shipping Information

Blue

UPC: 816479016370
ITF: 10816479016377
EAN: 5012786803718
Outer EAN: 5012786702554

Pink

UPC: 816479016332
ITF: 10816479016339
EAN: 5012786803725
Outer EAN: 5012786702561

Model: SH027

Box Type: Box with Flip
QTY/CTN: 12
Headset Dimensions: L145mm x W165mm x H55mm
(L5.71" x W6.50" x H2.17")
Headset Weight: 0.101kg
Gift Box: L172mm x W66mm x H177mm
(L6.77" x W2.60" x H6.97")
Gross Weight: 0.236kg
Outer Carton: L360mm x W355mm x H200mm
(L14.2" x W14.0" x H7.87")
Gross Weight: 1kg
Net weight: 0.75kg
Main material used for device and thickness: ABS+PC, 2mm (0.08")
Battery included: No
Battery type and battery weight: N/A



Earbuds 2

Great Sound. Value Priced.



Noise
Isolation



10mm
Drivers



Built-in Mic

Studio quality performance. Wireless freedom.

Motorola Pulse Escape+ offers studio quality performance and wireless freedom. These over-ear headphones are equipped with Bluetooth 4.1 technology, allowing you to listen to music or podcasts wire-free. Premium finishes and a water resistant design let you take them wherever you go, worry-free. Powerful 40mm drivers and noise isolation provide superb sound, while the 20 hours of playtime and foldable ear cups get you through your day. Plus, a built-in mic allows you to take and make calls hands-free, making Pulse Escape+ perfect for all-day use.



Features

- Noise isolation blocks out unwanted background noise
- 10mm drivers for awesome sound
- Ultra lightweight with secure ear hook wear style
- In-line microphone for hands-free calling
- Includes 2 extra gels

What the Unit Ships With

- In-ear headphones
- 3 ear gels
- User's guide

Shipping Information

Black	Green
UPC: TBC	UPC: TBC
ITF: TBC	ITF: TBC
EAN: TBC	EAN: TBC
Outer EAN: TBC	Outer EAN: TBC
White	Blue
UPC: TBC	UPC: TBC
ITF: TBC	ITF: TBC
EAN: TBC	EAN: TBC
Outer EAN: TBC	Outer EAN: TBC
Camo	Purple
UPC: TBC	UPC: TBC
ITF: TBC	ITF: TBC
EAN: TBC	EAN: TBC
Outer EAN: TBC	Outer EAN: TBC
Pink	Grey
UPC: TBC	UPC: TBC
ITF: TBC	ITF: TBC
EAN: TBC	EAN: TBC
Outer EAN: TBC	Outer EAN: TBC

Model: TBC
Box Type: Window
QTY/CTN: TBC
Headset Dimensions: L000mm x W000mm x H00mm
(L000" x W000" x H000")
Headset Weight: 000g
Gift Box: L000mm x W000mm x H000mm
(L000" x W000" x H000")
Gross Weight: 000kg (000 lbs.)
Outer Carton: L000mm x W000mm x H000mm
(L00" x W00" x H00")
Gross Weight: 000kg (000 lbs.)
Net weight: TBC
Main material used for device and thickness: TBC
Battery included: TBC
Battery type and battery weight: TBC



motorola

PACE 105

In-Ear Headphones



Stereo sound



Mic for hands-free
calls



Smart voice
assistant¹



Unlock 70,000+ Amazon Alexa
skills with Hubble Connected™

Premium Design. Awesome Sound.

They say the best things come in the smallest packages, and that's exactly how we designed the Motorola PACE 105 In-Ear Headphones. Experience a surprisingly big sound pumping out of a small package - with 10mm drivers and volume controls, these headphones pack a punch when delivering music to your ears. Created with a comfortable and secure fit, so you can stay connected and even go hands-free with the built-in mic. Plus, they come in various colors to fit every lifestyle! The Motorola PACE 105. Premium Design. Awesome Sound.



Features

- Stereo sound
- Mic for handsfree calls
- Voice assistant compatible
(works with Amazon Alexa, Siri®
and Google Assistant™)¹

What the Unit Ships With

Headphones
Quick start guide

(1) Operating systemdependent.

Shipping Information

Black

UPC: 816479017117 (Black)
ITF: 10816479017114
EAN: 5012786038493
Outer EAN: 5012786038509

White

UPC: 816479017148 (White)
ITF: 10816479017145
EAN: 5012786038554
Outer EAN: 5012786038561

Red

UPC: 816479017131
ITF: 10816479017138
EAN: 5012786038530
Outer EAN: 5012786038547

Blue

UPC: 816479017124
ITF: 10816479017121
EAN: 5012786038516
Outer EAN: 5012786038523

Model: SH039

Box Type: Plastic Blister
QTY/CTN: 20
Headset: TBD
Gross Weight: TBD
Gift Box: 0.98" x 2.17" x 5.91"
Gross Weight: 0.09 lbs
Outer Carton: 11.02" x 7.87" x 4.92"
Gross Weight: 2.22lbs

Pink

UPC: 816479017445
ITF: 10816479017442
EAN: 5012786039476
Outer EAN: 5012786039483





motorola

PACE 125

In-Ear Headphones



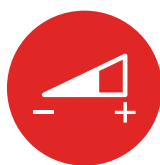
Unlock 70,000+ Amazon Alexa skills with Hubble Connected™



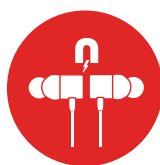
Rich
HD sound



Microphone for
handsfree
calls



Volume
control



Tangle-free
cable



Premium Design, Awesome Sounds.

Pace 125 in ear headphones is sound quality and style all rolled in one. This headphone delivers secure fit and comfort for extended listening no matter what you do or where you go. The tangle free cable, light weight design, and mic for hands-free call is what make Pace 125 a perfect choice.



Features

- Rich HD sound
- Mic for handsfree calls
- Volume control
- Tangle-free cable
- Stereo sound
- Mic for handsfree calls
- Voice assistant compatible¹
(works with Amazon Alexa, Siri®
and Google Assistant™)

What the Unit Ships With

In Ear Headphones
Quick Start Guide

(1) Operating system dependent.

Shipping Information

Black

UPC: 816479017193
ITF: 10816479017190
EAN: 5012786038936
Outer EAN: 5012786038943

White

UPC: 816479017223
ITF: 10816479017220
EAN: 5012786038998
Outer EAN: 5012786039001

Model: SH044

Box Type: PET Box

QTY/CTN: 20

Headset Dimensions: L18mm x W15mm x H32mm
(L0.71" x W0.59" x H1.26")

Headset Weight: 14g

Gift Box: L25mm x W55mm x H150mm
(L0.98" x W2.17" x H5.91")

Gross Weight: 0.04kg (0.10lbs)

Outer Carton: L242mm x W185mm x H150mm
(L9.53" x W7.28" x H5.91")

Gross Weight: 1.04kg (2.29lbs)

Net Weight: 1.88lbs

Battery Type: No

Unit Battery Weight: N/A

Main material used for device and thickness: ABC, 1.3mm





motorola

PACE 145

In-Ear Headphones



Rich HD sound



Mic for
hands-free
calls



Voice assistant
compatible¹



Unlock 70,000+ Amazon Alexa
skills with Hubble Connected™

Premium Design. Awesome Sound.

Sound, quality AND style – who says you can't have it all? Not us! And we're giving it to you with the Motorola PACE 145 In-Ear Headphones. These headphones were designed to give you a secure and comfortable fit, so you can stay connected no matter what you're doing. The rich HD sound, light-weight design and built-in mic for hands-free calling, all bundled into one, make these headphones the perfect companion anytime, anywhere. Plus, they come in various colors to fit every lifestyle! The Motorola PACE 145. Premium Design. Awesome Sound.



Features

- Rich HD sound
- Mic for handsfree calls
- Voice assistant compatible
(works with Amazon Alexa, Siri®
and Google Assistant™)¹

What the Unit Ships With

Headphones
Quick start guide

(1) Operating systemdependent.

Shipping Information

Black

UPC: 816479016950
ITF: 10816479016957
EAN: 5012786039490
Outer EAN: 5012786039506

White

UPC: 816479016974
ITF: 10816479016971
EAN: 5012786039513
Outer EAN: 5012786039520

Red

UPC: 816479017452
ITF: 10816479017459
EAN: 5012786039537
Outer EAN: 5012786039544

Blue

UPC: 816479017469
ITF: 10816479017466
EAN: 5012786039551
Outer EAN: 5012786039568

Model: SH046

Box Type: Plastic Blister
QTY/CTN: 20
Headset: TBD
Gross Weight: TBD
Gift Box: 0.98" x 2.17" x 5.91"
Gross Weight: 0.09 lbs
Outer Carton: 11.02" x 7.87" x 4.92"
Gross Weight: 2.22lbs

Pink

UPC: 816479017476
ITF: 10816479017473
EAN: 5012786039575
Outer EAN: 5012786039582





motorola

PACE 200

In-Ear Metal Headphones



Rich HD sound



Mic for hands-free
calls



Voice assistant
compatible¹



Unlock 70,000+ Amazon Alexa
skills with Hubble Connected™



Premium Design. Awesome Sound.

Sound, quality AND style – who says you can't have it all? Not us! And we're giving it to you with the Motorola PACE 200 In-Ear Headphones. These headphones were designed to give you a secure and comfortable fit, so you can stay connected no matter what you're doing. The rich HD sound, light-weight design and built-in mic for hands-free calling, all bundled into one, make these headphones the perfect companion anytime, anywhere. Plus, they come in various colors to fit every lifestyle! The Motorola PACE 200. Premium Design. Awesome Sound.



Features

- Rich HD sound
- Mic for handsfree calls
- Voice assistant compatible
(works with Amazon Alexa, Siri®
and Google Assistant™)¹

What the Unit Ships With

Headphones
Quick start guide

(1) Operating systemdependent.

Shipping Information

Black

UPC: 816479016936
ITF: 10816479016933
EAN: 5012786039599
Outer EAN: 5012786039605

Silver

UPC: 816479017483
ITF: 10816479017480
EAN: 5012786039612
Outer EAN: 5012786039629

Gold

UPC: 816479016943
ITF: 10816479016940
EAN: 5012786039636
Outer EAN: 5012786039643

Rose Gold

UPC: 816479017520
ITF: 10816479016926
EAN: 5012786039650
Outer EAN: 5012786039667

Model: SH047

Box Type: Plastic Blister
QTY/CTN: 20
Headset: TBD
Gross Weight: TBD
Gift Box: 0.98" x 2.17" x 5.91"
Gross Weight: 0.09 lbs
Outer Carton: 11.02" x 7.87" x 4.92"
Gross Weight: 2.22 lbs





motorola

HK 105

Mono Headphones



Super light



Up to 4 hours of
talk time¹



Smart voice
assistant²



Unlock 70,000+ Amazon Alexa
skills with Hubble Connected™

Easy To Use. Easy To Choose.

Going hands-free with the Motorola HK105 is the easiest decision you'll make. This value-conscious Bluetooth headset features a lightweight, True Comfort design, plus up to 5 hours of talk time to help you stay connected all day. Connect to your Bluetooth enabled device with ease with EasyPair™ technology, and roam up to 330ft thanks to the HK105's extended range, with call clarity every step of the way. HK105 Bluetooth Wireless Headset. Easy to use. Easy to choose.



Features

- Bluetooth® v5.0
- Value-conscious bluetooth headset features a lightweight
- True comfort design
- Up to 4 hours of talk time¹
- Wireless headset. Easy to use.
- Makes life simpler with voice command²
 - Alexa, Siri, Google Assistant

What the Unit Ships With

Wireless Headset
Ear Gel
Wall Charger
User's Guide

(1) Device, signal strength and network dependent.
(2) Operating system dependent.

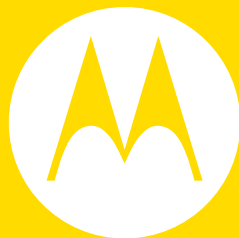
Shipping Information

Grey

UPC: 816479015243
ITF: 10816479015240
EAN: TBC
Outer EAN: TBC

Model: MH001 G

Box Type: Closed
QTY/CTN: 5
Headset Dimensions: L46.0mm x W13.0mm x H18.0mm
(L1.81" x W0.51" x H0.71")
Gross Weight: 0.009kg (0.02 lbs.)
Gift Box: L89.9mm x W39.9mm x H95.0mm
(L3.54" x W1.57" x H3.74")
Gross Weight: 0.050kg (0.11lbs.)
Outer Carton: L222.3mm x W101.6mm x H114.3mm
(L8.75" x W4.00" x H4.50")
Gross Weight: 0.327kg (0.72lbs.)
Net weight: TBC
Main material used for device and thickness: TBC
Battery included: TBC
Battery type and battery weight: TBC



www.motorolastore.com

Manufactured, distributed, or sold by Binatone Electronics International LTD., official licensee for this product. MOTOROLA and the Stylized M Logo are trademarks or registered trademarks of Motorola Trademark Holdings, LLC. and are used under license. Apple logo and Safari are trademarks of Apple Inc., registered in the U.S. and other countries. App Store is a service mark of Apple Inc. Google Play, Android, and Chrome are trademarks of Google Inc. Wi-Fi is a trademark of the Wi-Fi Alliance. Internet Explorer and Windows are trademarks of the Microsoft group of companies. Java is a registered trademark of Oracle and/or its affiliates. Firefox is trademark or registered trademarks of Mozilla Corporation. All other trademarks are the property of their respective owners. © 2019 Motorola Mobility LLC. All rights reserved.

The actual products may vary slightly from the photograph.

Screen images are simulated.